

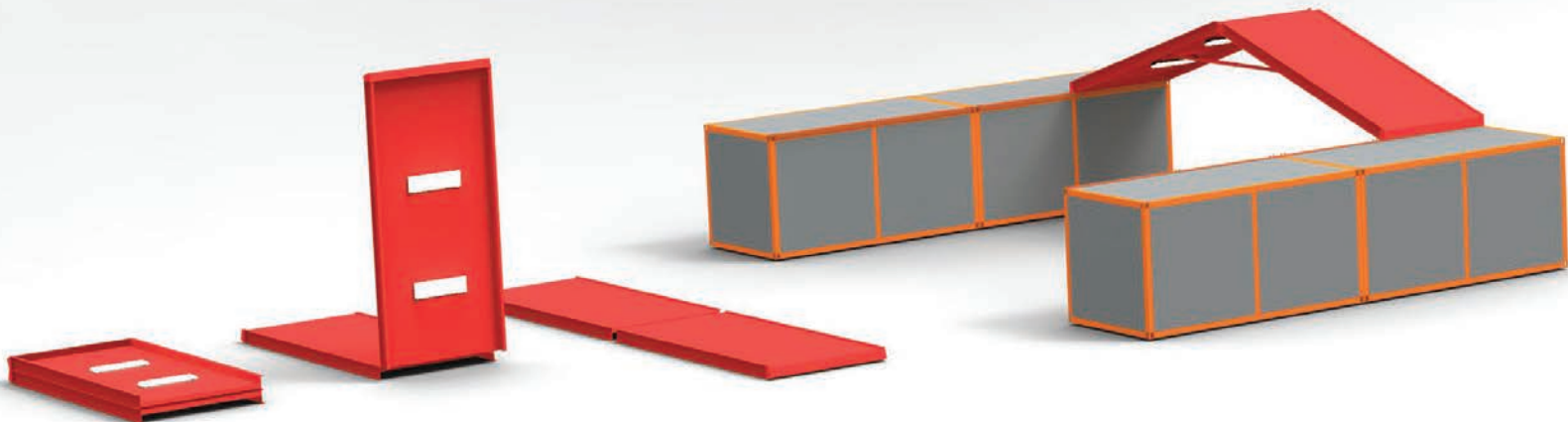
**The ConTEMProof turns adaptable Xtreme Cubes into a complete building solution.**



**Rapid deployment using Xtreme Cubes with minimal site preparation and basic equipment.**

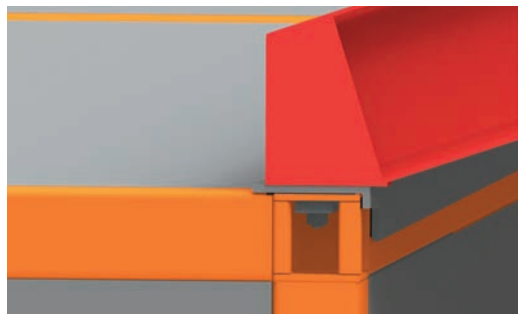
Present equipment is Xtreme Manufacturing Telehandler model XR1245.

Mr. Safety stands at 6' 2" with hard hat.

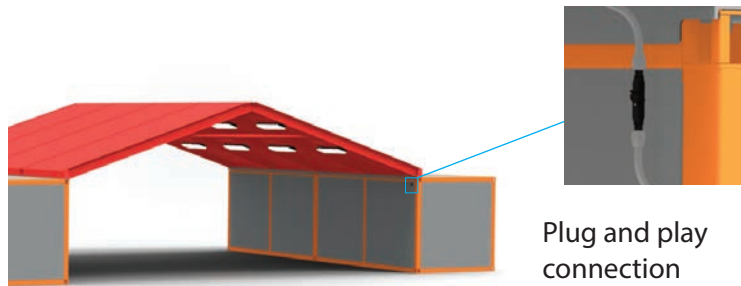


Standard ConTEMProof features Galvalume cladding with gray epoxy coated steel frames. Red shown for product emphasis. Color ConTEMProof available upon request.

**Factory installed plug and play lighting and simple connections make deployment and relocation quick and easy.** Please visit our website to learn more.

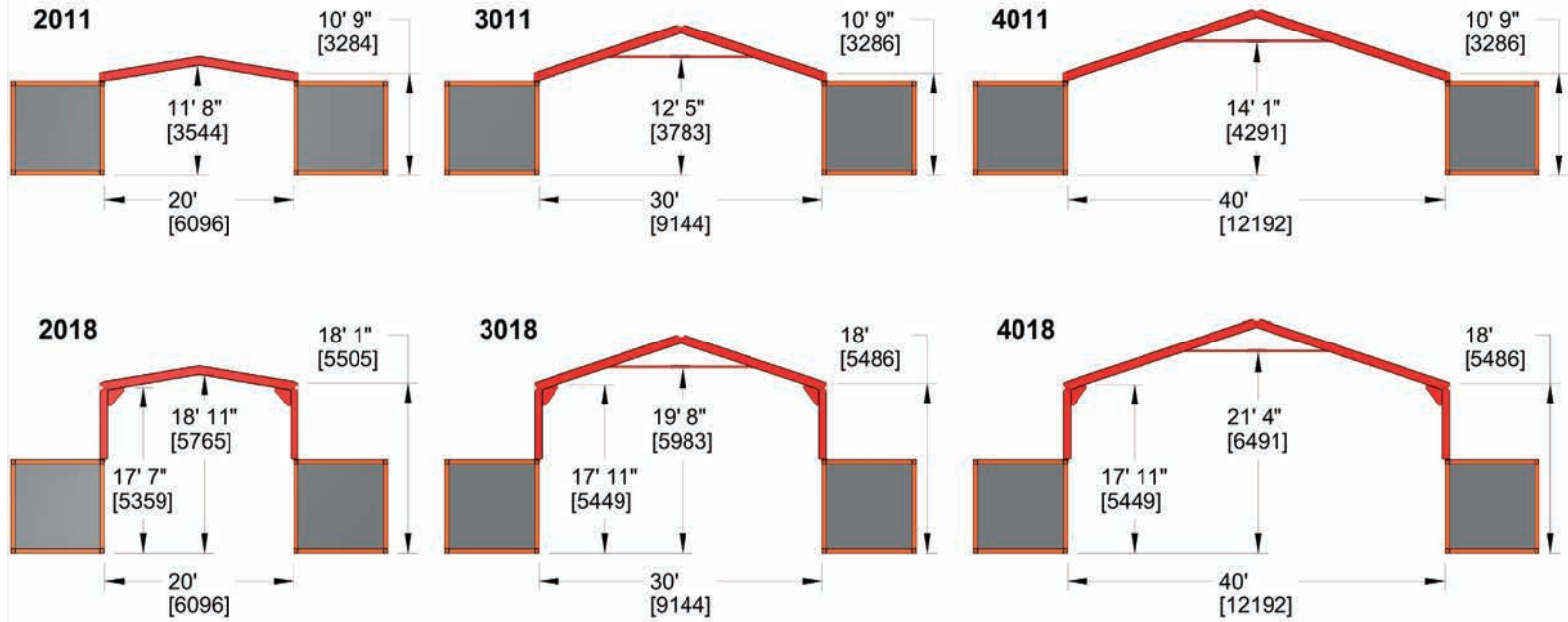


Simple structural connection to Xtreme Cube



Plug and play connection to Xtreme Cube

**Standard sizes**

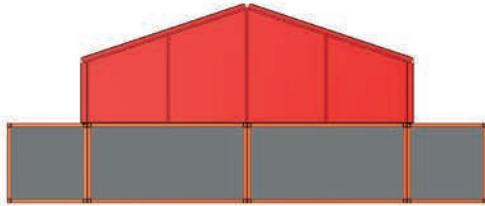


**End wall options**

Partial End Wall

Service Door

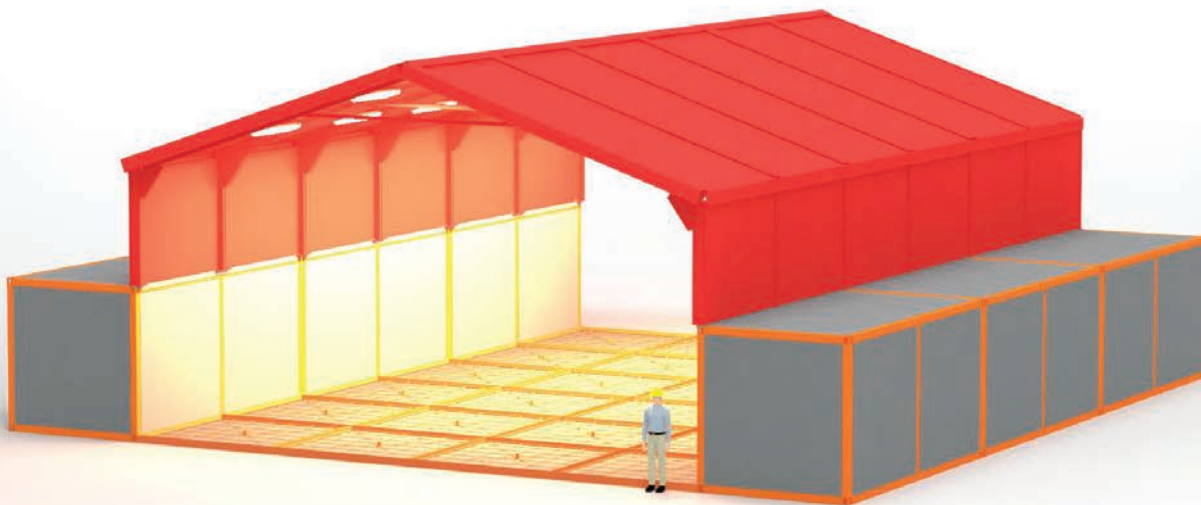
Fully Enclosed



(End wall may be enclosed with Cubes)

**4018 x 60 ConTEMProof with Xtreme Cubes and X-Form concrete tiles**

**Options**



- Interior metal liner
- R13 insulation
- Upgraded insulation up to R21
- Exterior lighting package
- Equipment power package
- Heating package
- Ventilation package
- Fall arrest system
- Snow shed
- Personnel and service doors
- Custom configurations
- X-Form concrete tiles
- Custom colors
- Modular foundation
- Spreader bar and rigging