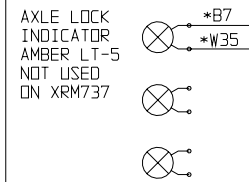
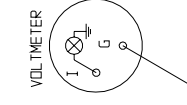
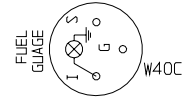
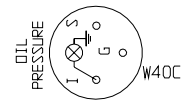
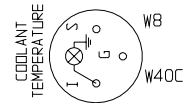


CHASSIS FUNCTIONS

1A	W1/1A FUEL SUT OFF SOLENOID
2A	W2/2A START RELAY (+ SIDE)
3A	W3/3A FUEL PUMP (+ SIDE)
4A	SPARE
5A	W5/5A GLOW PLUG
6A	W7/7A OIL PRESSURE SENDER
7A	W8/8A COOLANT TEMPERATURE
8A	W10/10A START RELAY (- SIDE)
9A	W15/15A PARK BRAKE VALVE
10A	W16/16A LOW BRAKE PRESSURE WARNING
11A	W23/23A REAR AXLE FLOAT VALVE
12A	W24/24A LEVEL LOCKOUT /24B REAR BYPASS
13A	W25/25A LEFT SWAY LOCKOUT
14A	W26/26A RIGHT SWAY LOCKOUT
15A	W62/62A RIGHT O/R SWITCH N.O.
16A	W63/63A LEFT O/R SWITCH COMMON
17A	W58/58A RIGHT O/R SWITCH N.C.
18A	SPARE

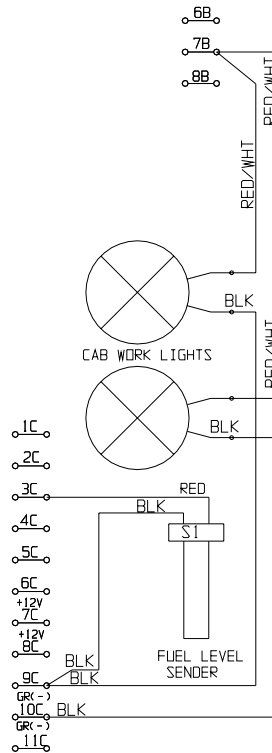
1B	W35/28/28A SWAY LIMIT OVERRIDE-IN
2B	W29/29A SWAY LIMIT OVERRIDE-OUT
3B	W34/34A BOOM ANGLE LIMIT
4B	W36/36A STEER MODE 'B'
5B	W37/37A STEER MODE 'A'
6B	W39/39A REAR AXLE CENTER SWITCH
7B	W41/41A/41B CAB LIGHTS 12VDC
8B	SPARE
9B	W66/66A OIL PRESS SW TO HR METER
10B	W56/56A LEFT O/R UP
11B	W55/55A LEFT O/R DOWN
12B	W54/54A RIGHT O/R UP
13B	W53/53A RIGHT O/R DOWN
14B	W59/565 USED FOR XRM945/737 ONLY
15B	W60/60A LEFT O/R SWITCH N.C.
16B	W61/61A LEFT O/R SWITCH N.O.

1C	W43/43A HORN
2C	W44/44A BACKUP ALARM/LIGHT
3C	W45/45B FUEL LEVEL CAB SIDE ONLY
4C	W51/51A OIL TEMPERATURE SWITCH
5C	W11A ALTERNATOR INITIATE (D-)
6C	SWITCHED 12VDC
7C	
8C	
9C	
10C	GROUND (-)
11C	
12C	

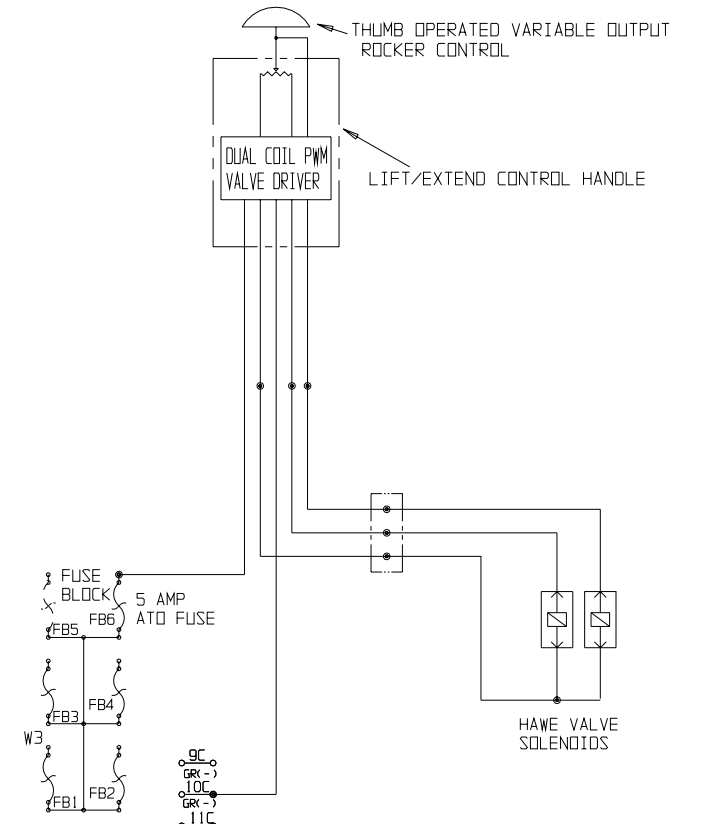


CAB SUPPLEMENTAL WIRING

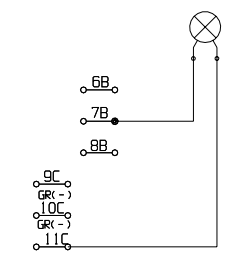
ADDED WIRING HARNESS FOR XRM945 WITH LOCKING REAR AXLE



INSTALLED ON ASSEMBLY LINE ROUTE THROUGH FRAME TUBING



ELECTRO-PROPORTIONAL FORK TILT CONTROL



FLASHING AMBER BEACON OR ANY OTHER LIGHTS OFF THE STANDARD CONSOLE LIGHT SWITCH

- NOTES:
1. UNLESS OTHERWISE INDICATED ALL WIRES ARE 16 AWG. THOSE WITH 18 AWG INDICATED MAY ALSO BE 16 AWG
 2. UNLABELED AND Bxxx LABELED GROUND WIRES ARE BLACK 16 AWG UNLESS NOTED OTHERWISE.
 3. ALL WIRES LABELED Wxxx ARE WHITE 16 AWG.
 4. NUMBERED WIRES WITH A COMMON LETTER SUFFIX MAY BE DAISY CHAINED

FRESNO ENGINEERING DESIGN GROUP		DESCRIPTION		ECD	DRN	DATE
5493 EAST OLIVE AVE. FRESNO CALIFORNIA 93727		CAD FILE:	DRN: GLC	DATE: 2/11/05	SCALE: NONE	
THE INFORMATION CONTAINED IN THIS DRAWING IS THE SOLE PROPERTY OF FRESNO ENGINEERING DESIGN GROUP. ANY REPRODUCTION IN WHOLE OR IN PART WITHOUT THE WRITTEN PERMISSION OF FRESNO ENGINEERING DESIGN IS PROHIBITED.		TITLE: SUPPLEMENTAL WIRING AND OPTIONS			SHT 6/6	REV
		MACHINE: XRM737, XRM742/842	DWG. NO. 25206-000			