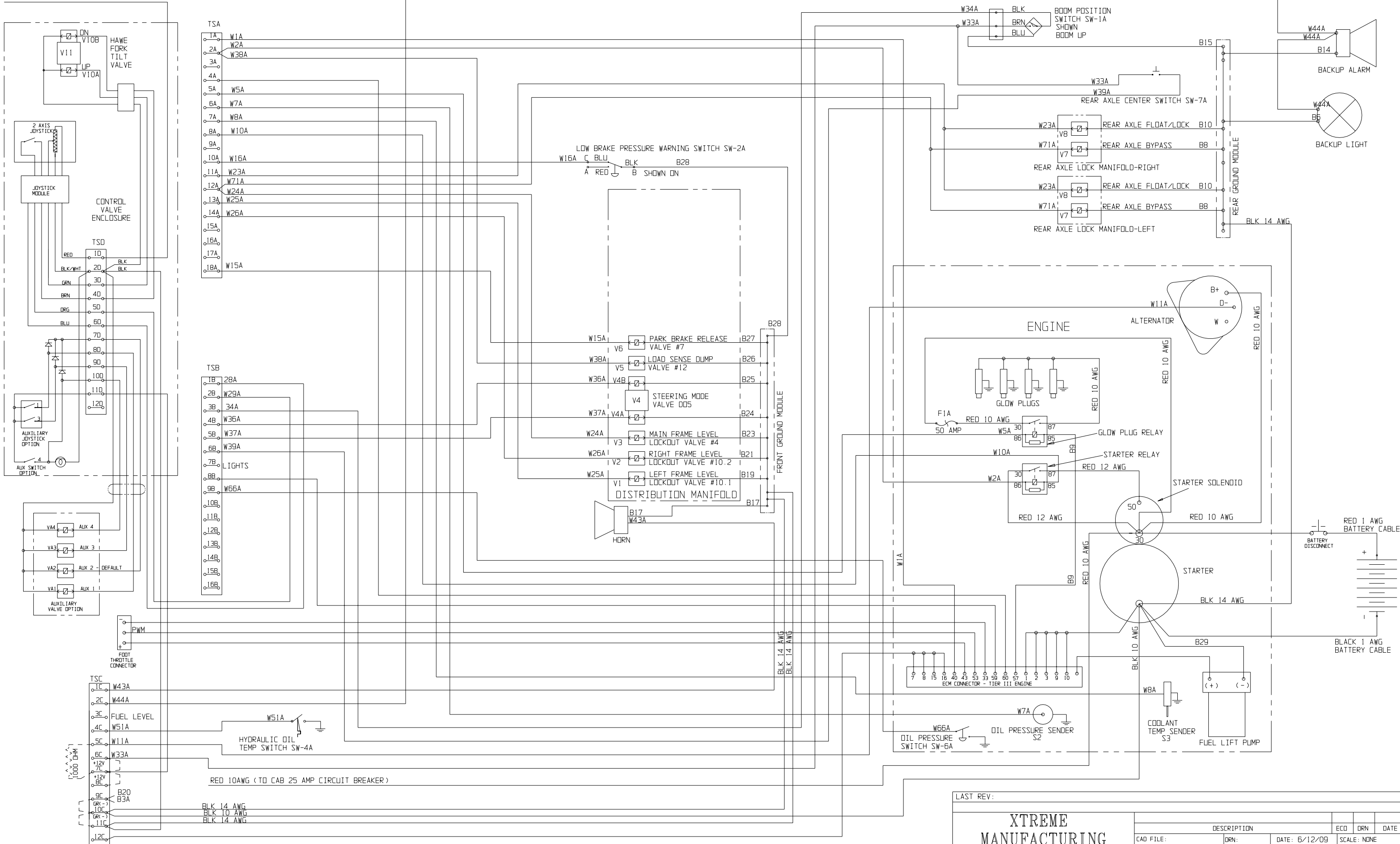


FROM FUSE BLOCK FB-5



NOTE: 1. UNLESS OTHERWISE INDICATED ALL WIRES ARE 16 AWG. THOSE WITH AN ASTERISK PREFIX ARE 18 AWG (THESE MAY ALTERNATIVELY BE 16 AWG)
 2. BLK AND Bxxx LABELED GROUND WIRES ARE BLACK 16 AWG UNLESS NOTED OTHERWISE.
 3. ALL WIRES LABELED Wxxx ARE WHITE 16 AWG UNLESS NOTED OTHERWISE.
 4. NUMBERED WIRES WITH A COMMON LETTER SUFFIX MAY BE DAISY CHAINED WITH ANY JOINTS SOLDERED AFTER CRIMPING

LAST REV:		ECO		DRN		DATE	
XTREME MANUFACTURING 1415 W BONANZA RD LAS VEGAS NEVADA 89106 THE INFORMATION CONTAINED IN THIS DRAWING IS THE SOLE PROPERTY OF XTREME MANUFACTURING DIV OF AHERN RENTALS. REPRODUCTION IN WHOLE OR IN PART WITHOUT THE WRITTEN PERMISSION OF XTREME MANUFACTURING IS PROHIBITED.		DESCRIPTION		DATE: 6/12/09		SCALE: NONE	
		TITLE: OUTRIGGER MODEL ELECTRICAL CIRCUIT		SHT 2/4		REV 0	
MACHINE: XRM3034		DWG. NO. 25223-000		TYPE:			