

## 12' x 24' ADA RESTROOM

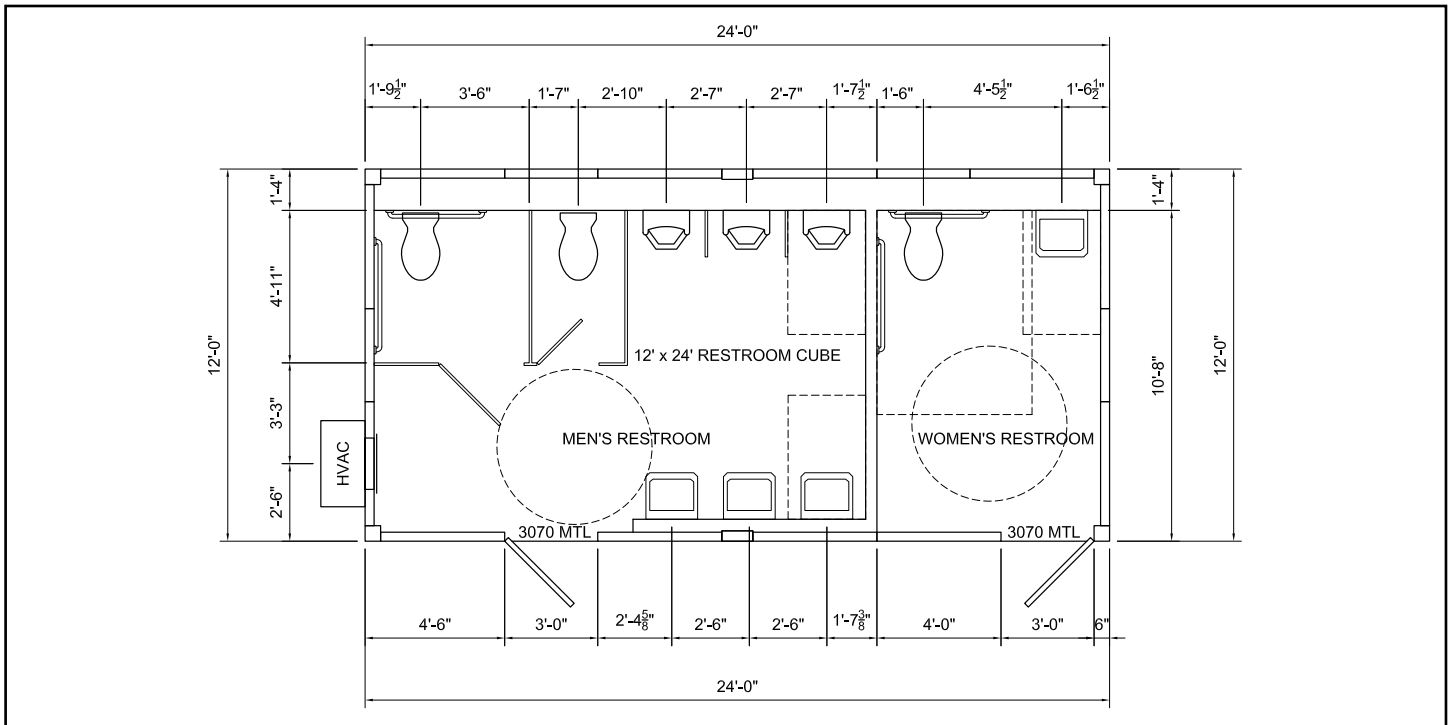


\*shown with optional features

The 12' x 24' Restroom Cube is the ideal solution for jobsites, events, factories and remote locations thanks to its portability and quality.

**XTREME CUBE™**

# 12' x 24' ADA RESTROOM



## ABOUT XTREME CUBES

- Welded structural steel tube frame enhances the cube's overall strength and increases options for customization.
- The standard cube height is 10'. cube lengths and widths are available in increments of 8', 10' and 12'.
- Modular wall panels can be easily customized with doors, windows, and other options.
- Each cube is engineered to your specific location conditions to withstand snow load, wind load and seismic events.
- Premium components are utilized inside and out for durability and long life.
- Utility connections are preconfigured for a convenient and simple installation.
- Installation is quick and simple. When delivered, cubes can be set in position and typically are ready to use in one to two days.

## STANDARD FEATURES

The 12' x 24' Restroom Cube comes equipped with:

- Laminate flooring
- White laminate wall paneling
- 3' x 7' exterior doors (2)
- Full insulation: R-21 on walls, R-28 on floor, R-35 on roof
- Exterior single-phase load center & breakers
- 8' interior LED light (2)
- 4' interior LED light
- Duplex outlets (3)
- Wall mounted heat pump HVAC unit with ductwork
- Exhaust Fan (2)
- Wall-mounted toilets (3)
- Wall-mounted urinals (3)
- Lavatories (4)
- Electric tankless water heater
- Stall partitions (2)
- Urinal screens (2)
- ADA grab bars - set of three (2)
- Plumbing connections & installation

All Xtreme Cubes can be customized with a wide range of options. Speak to your Xtreme Cube representative for details and pricing.

Xtreme Manufacturing  
8350 Eastgate Road  
Henderson, NV 89015

T: (702) 636-2969 T: (800) 497-1704 [www.XMFG.com](http://www.XMFG.com)

Specifications subject to change without notice. Photos and diagrams in this brochure are for promotional purposes only.

**XTREME**  
MANUFACTURING