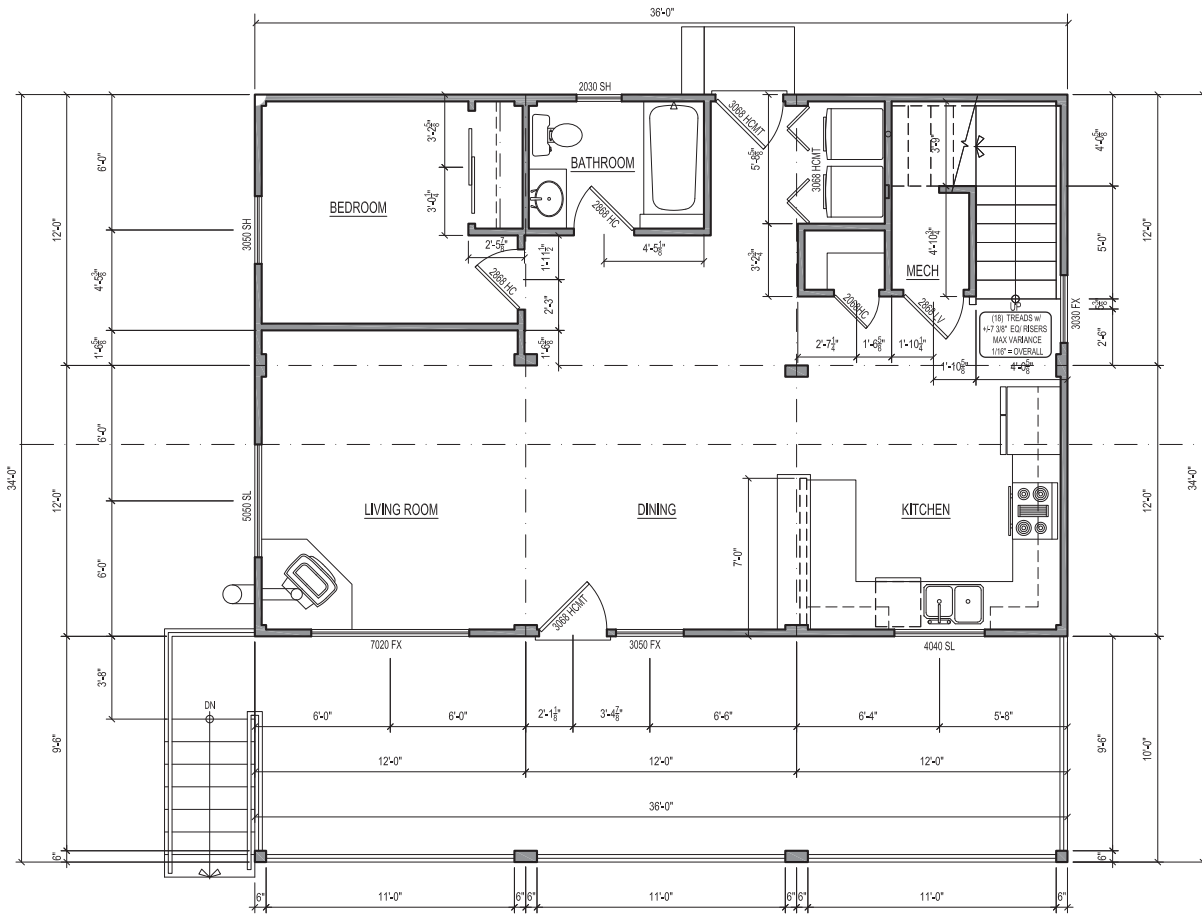




## 12' x 24' XTREME CABIN HOME

(shown with optional features)

**XTREME CUBE**™



## 12' x 24' XTREME CABIN HOME

- Virtually Maintenance Free
- Vinyl or Steel Log style siding (optional)
- Trex product decking (optional)
- Wood grain textured laminate flooring (optional)
- Wood burning fireplace
- Kitchen with appliances
- Bath, toilet w/ vanity and exhaust
- Murphy bed w/ storage (optional)

## XTREME CUBE STANDARD FEATURES

- Welded structural steel tube frame enhances the Cube's overall strength and customization.
- Standard Cube height is 10 feet. Cube lengths and widths are available in increments of 8', 10' and 12'.
- Modular wall panels are versatile enough to add windows, doors and other available options.
- Engineered to your specific location conditions to withstand snow load, wind load and seismic events.
- Premium components are utilized inside and out for durability, long life, and virtually maintenance free use.
- Utility connections are preconfigured for a convenient and simple installation.
- Installation is quick and simple. When delivered, Cubes can be set in position and ready to be used typically in one to two days.

Xtreme Manufacturing  
8350 Eastgate Rd.  
Henderson, NV 89015

T: (702) 636-2969 T: (800) 497-1704 [www.XMFG.com](http://www.XMFG.com)

**XTREME**  
MANUFACTURING