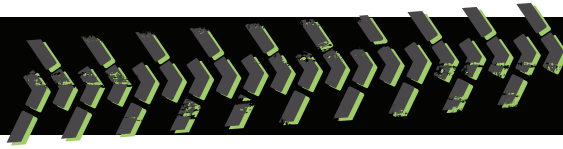


XR1734-C



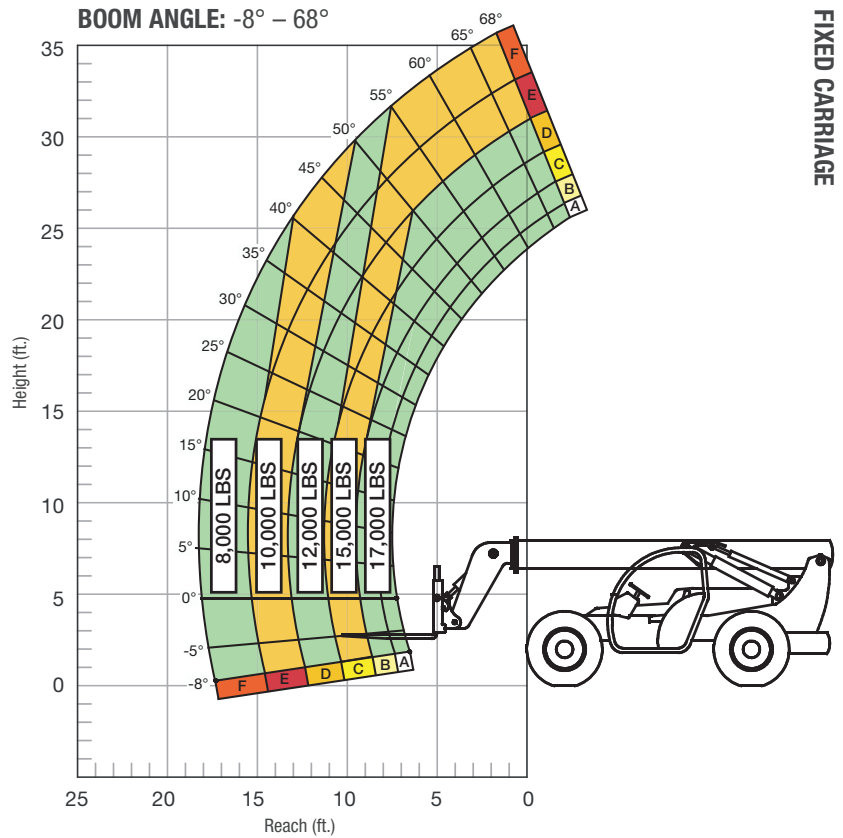
C CLASS
CARRIAGE
**HIGH
CAPACITY
ROLLER BOOM**

SPECIFICATIONS

Lift capacity	17,000 lbs	7,711kg
Max lift height	34'	10.36m
Forward reach	17'	5.18m
Frame leveling L/R	11°	
Weight*	33,360 lbs	15,131kg
Engine (Cummins 3.8L)	120 hp (Tier 4F)	
Axles	Dana 213	
Transmission	Dana T20000	
Fuel capacity	50 gal	189.2L
Tires	foam-filled 15.5 x 25	
Hydraulic flow (per min)	49 gal	185.4L
Hydraulic pressure	3,800 psi	262bar
Hydraulic oil capacity	62 gal	235L
Length to fork face	22'	6.70m
Width	101"	2.56m
Height	8' 2"	2.46m
Wheelbase	125"	3.17m
Ground clearance	16.5"	419mm
Turning radius	12'	3.65m

*Weight based on open cab model with foam filled tires.

LOAD CAPACITY CHART



FIXED CARRIAGE

24" LOAD CENTER

Load ratings shown are for vehicles equipped with foam-filled or solid tires. Load includes weight of any rigging. 8,500 lbs. at 24" minimum capacity/fork (17,000 lbs./pair).



STANDARD FEATURES

360° operator visibility	Ductile steel manifold
Suspension seat	Easy cab mounted grab handles
Easy service access	Master disconnect switch
Protected tilt & extend cylinders	Boom lift point
Steel hydraulic & fuel tanks	Manual lowering valve (cylinders)
Long life Lexan labels	Large cross section boom
Heavy duty boom chains	Easy tie downs
Suspended pedals	Heavy duty pre-cleaner
Large capacity fuel tank	Additional high pressure hydraulic filter
Trunnion-mounted sway cylinders	Individual gauges/switches
Melonite pins	Steel hood
Standard auxiliary hydraulics	Solid steel plate chassis
Steel dash	Rear axle stabilization (RAS)
Long life boom rollers	Back up alarm with light
Electrical aux hydraulic control	Dual batteries
Center-mounted powertrain	"Y" frame handle
Cab step	No outriggers