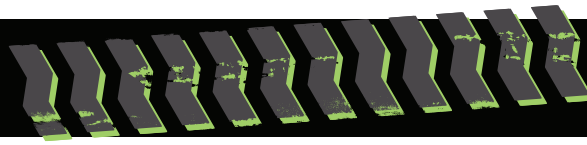


XR 2450-D



D CLASS
CARRIAGE

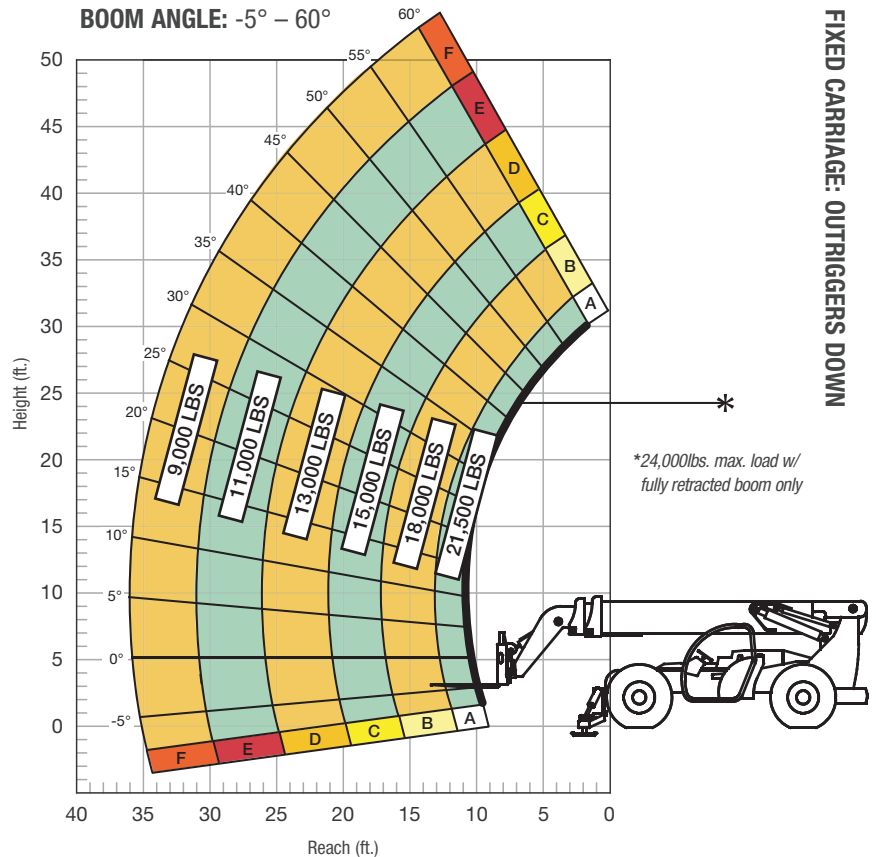
**ULTRA HIGH
CAPACITY
ROLLER BOOM**

SPECIFICATIONS

Lift capacity	24,000 lbs	10,886kg
Max lift height	50'	15.24m
Forward reach	36'	10.97m
Frame leveling L/R	8°	
Weight*	56,560 lbs	25,655kg
Engine (Cummins 4.5L)	173 hp (Tier 4F)	
Axles	Kessler 82.8416.3	
Transmission	Dana T32000	
Fuel capacity	72 gal	272.5L
Tires	foam-filled 16 x 25-28	
Hydraulic flow (per min)	49 gal	185.4L
Hydraulic pressure	4,300 psi	296.4bar
Hydraulic oil capacity	58 gal	219.5L
Length to fork face	28'	8.53m
Width	102"	2.59m
Height	9' 6"	2.89m
Wheelbase	148"	3.77m
Ground clearance	15"	381mm
Turning radius	16' 8"	5.08m

*Weight based on closed cab model with AC and foam filled tires.

LOAD CAPACITY CHART



24" LOAD CENTER

Rear axle must be locked and outriggers firmly against ground. Load ratings shown are for vehicles equipped with foam-filled tires only. 12,000 lbs. at 24" minimum capacity/fork (24,000 lbs./pair).

STANDARD FEATURES

360° operator visibility	Ductile steel manifold
Suspension seat	Easy cab mounted grab handles
Easy service access	Master disconnect switch
Protected tilt & extend cylinders	Boom lift point
Steel hydraulic & fuel tanks	Manual lowering valve (cylinders)
Long life Lexan labels	Large cross section boom
Cab step	Easy tie downs
Suspended pedals	Heavy duty pre-cleaner
Large capacity fuel tank	Additional high pressure hydraulic filter
Trunnion-mounted sway cylinders	Heavy duty boom chains
Melonite pins	Steel hood
Standard auxiliary hydraulics	Solid steel plate chassis
Steel dash	Rear axle stabilization (RAS)
Long life boom rollers	Back up alarm with light
Wider outrigger stance	Dual batteries
Center-mounted powertrain	"Y" frame handle

