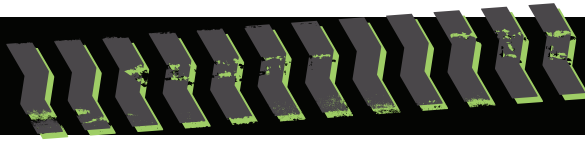


# XR3034-D



**D** CLASS  
CARRIAGE

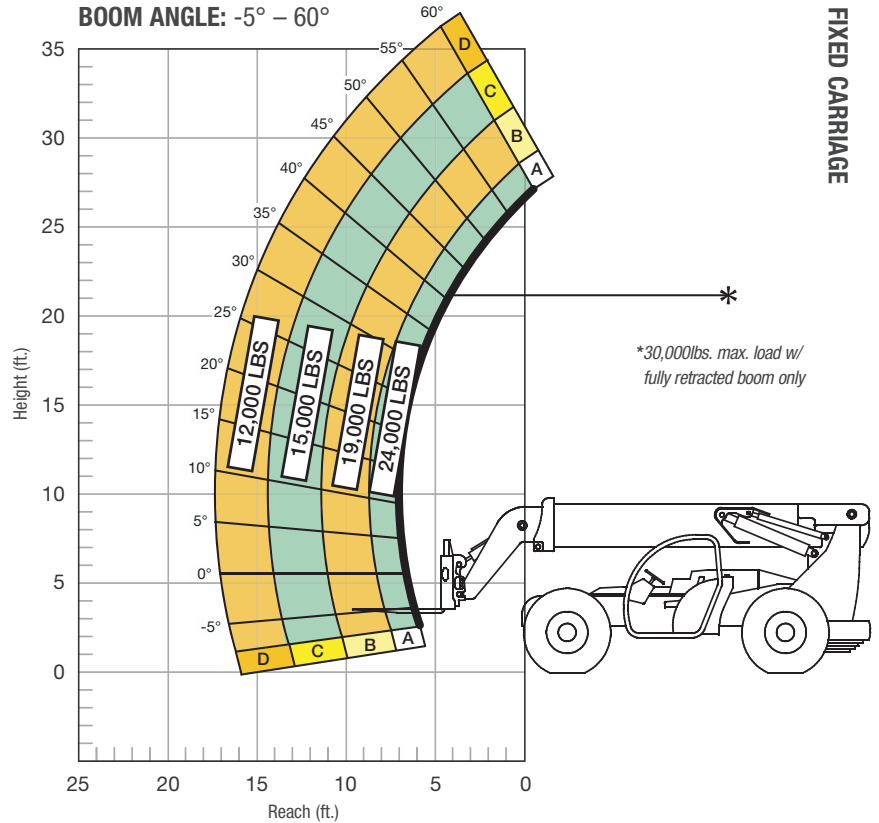
**ULTRA HIGH  
CAPACITY  
ROLLER BOOM**

## SPECIFICATIONS

Lift capacity	30,000 lbs	13,608kg
Max lift height	34'	10.36m
Forward reach	17' 6"	5.33m
Frame leveling L/R	8°	
Weight*	49,100 lbs	22,278kg
Engine (Cummins 4.5L)	173 hp (Tier 4F)	
Axles	Kessler 82.8416.3	
Transmission	Dana T14	
Fuel capacity	72 gal	272.5L
Tires	foam-filled 16 x 25-28	
Hydraulic flow (per min)	49 gal	185.4L
Hydraulic pressure	4,500 psi	310.2bar
Hydraulic oil capacity	58 gal	219.5L
Length to fork face	23' 11"	7.28m
Width	102"	2.59m
Height	9' 6"	2.89m
Wheelbase	148"	3.77m
Ground clearance	15"	381mm
Turning radius	16' 8"	5.08m

\*Weight based on closed cab model with AC and foam filled tires.

## LOAD CAPACITY CHART



Load ratings shown are for vehicles equipped with foam-filled tires only.  
15,000 lbs. at 24" minimum capacity/fork (30,000 lbs./pair).

## STANDARD FEATURES

360° operator visibility	Ductile steel manifold
Suspension seat	Easy cab mounted grab handles
Easy service access	Master disconnect switch
Protected tilt & extend cylinders	Boom lift point
Steel hydraulic & fuel tanks	Manual lowering valve (cylinders)
Long life Lexan labels	Large cross section boom
Suspended pedals	Easy tie downs
Heavy duty boom chains	"Y" frame handle
Large capacity fuel tank	Heavy duty pre-cleaner
Trunnion-mounted sway cylinders	Additional high pressure hydraulic filter
Melonite pins	Steel hood
Standard auxiliary hydraulics	Solid steel plate chassis
Steel dash	Rear axle stabilization (RAS)
Center-mounted powertrain	Back up alarm with light
Long life boom rollers	Cab step
Dual batteries	