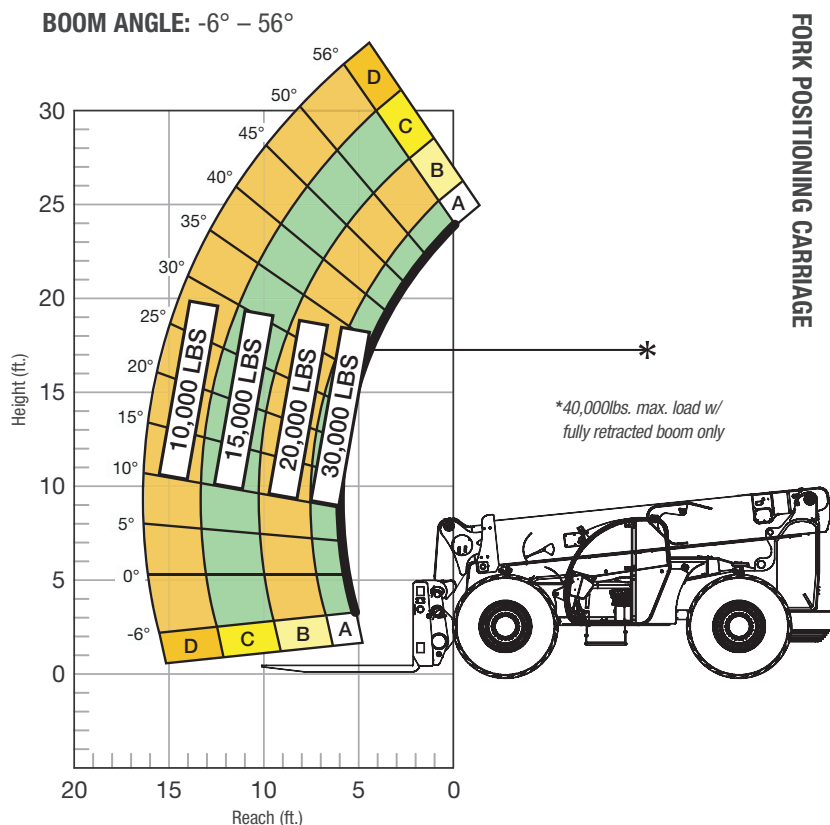


SPECIFICATIONS

Lift capacity	40,000 lbs	18,143kg
Max lift height	30'	9.14m
Forward reach	16' 4"	4.97m
Frame leveling L/R	8°	
Weight*	63,000 lbs	28,756kg
Engine (Cummins 4.5L)	173 hp (Tier 4F)	
Axles	Kessler 91.8938.3	
Transmission	Dana T32000	
Fuel capacity	72 gal	272.5L
Tires	foam-filled 23.5 R25	
Hydraulic flow (per min)	49 gal	185.4L
Hydraulic pressure	4,000 psi	275.7bar
Hydraulic oil capacity	58 gal	219.5L
Length to fork face	22' 3"	6.78m
Width	118"	2.99m
Height	9' 10"	2.99m
Wheelbase	148"	3.77m
Ground clearance	18"	457mm
Turning radius	21' 11"	6.68m

*Weight based on closed cab model with AC and foam filled tires.

LOAD CAPACITY CHART



36" LOAD CENTER

Load ratings shown are for vehicles equipped with foam-filled tires only.
20,000 lbs. at 36" minimum capacity/fork (40,000 lbs./pair).



STANDARD FEATURES

360° operator visibility	Ductile steel manifold
Suspension seat	Easy cab mounted grab handles
Easy service access	Master disconnect switch
Protected tilt & extend cylinders	Boom lift point
Steel hydraulic & fuel tanks	Manual lowering valve (cylinders)
Long life Lexan labels	Large cross section boom
Suspended pedals	Easy tie downs
Large capacity fuel tank	"Y" frame handle
Trunnion-mounted sway cylinders	Heavy duty pre-cleaner
Melonite pins	Additional high pressure hydraulic filter
Standard auxiliary hydraulics	Steel hood
Steel dash	Solid steel plate chassis
Center-mounted powertrain	Rear axle stabilization (RAS)
Long life boom rollers	Back up alarm with light
Dual batteries	Cab step