



## SPECIFICATIONS

Lift capacity	11,000 lbs
Max lift height	47'
Forward reach	31' 6"
Frame leveling L/R	11°
Weight*	33,040 lbs
Engine (Cummins)	3.8L 74/120hp – T4F
Axles	ZF MST3055 / 3060
Transmission	ZF 3WG94
Fuel capacity	50 gal
Tires	15.5 x 25 G2 foam-filled
Hydraulic flow (gpm)	49 gal
Hydraulic pressure	3,500 psi
Hydraulic oil capacity	62 gal
Length to fork face	21' 6"
Width	101"
Height	8' 1"
Wheelbase	125"
Ground clearance	16.5"
Turning radius	12'

\*Weight based on open cab model with foam-filled tires.

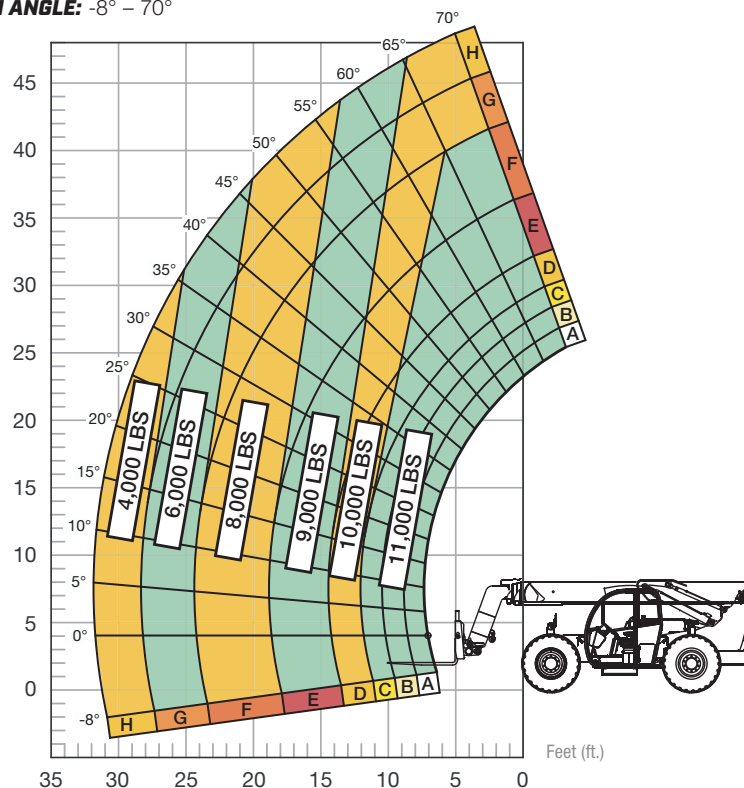
## STANDARD FEATURES

360° operator visibility	Ductile steel manifold
Suspension seat	Easy cab-mounted grab handles
Easy service access	Master disconnect switch
Protected tilt & extend cylinders	Boom lift point
Steel hydraulic & fuel tank	Manual lowering valve (cylinders)
Long life Lexan labels	Large cross section boom
Heavy-duty boom chains	Easy tie-downs
Suspended pedals	Heavy-duty pre-cleaner
Large-capacity fuel tank	Additional high-pressure hydraulic filter
Trunnion-mounted sway cylinders	Individual gauges/switches
Melonite pins	Steel hood
Standard auxiliary hydraulics	Solid steel plate chassis
Steel dash	Rear axle stabilization (RAS)
Long-life boom rollers	Backup alarm with light
Electrical aux hydraulic control	Dual batteries
Center-mounted powertrain	Limited-slip front axle
Cab step	Engine block heater

## LOAD CAPACITY CHART

No operation above 40° boom angle with rear axle unlocked. Load ratings shown are for vehicles equipped with foam-filled or solid tires. Load includes weight of any rigging. 5,500 lbs. at 24" minimum capacity/fork (11,000 lbs./pair).

**BOOM ANGLE:** -8° – 70°



**FIXED CARRIAGE | 24" LOAD CENTER**

