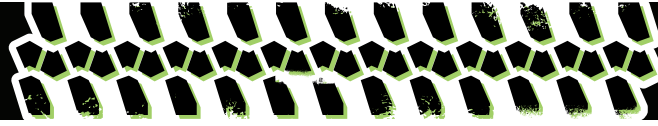


XR1255-B



B CLASS
CARRIAGE

HIGH PIVOT
ROLLER BOOM

SPECIFICATIONS

Lift capacity	12,000 lbs
Max lift height	55'
Forward reach	38'
Frame leveling L/R	11°
Weight*	40,220 lbs
Engine (Cummins)	3.8L 134hp – T4F
Axles	Dana 213
Transmission	Dana T20000
Fuel capacity	100 gal
Tires	15.5 x 25 G2 foam-filled
Hydraulic flow (gpm)	49 gal
Hydraulic pressure	3,500 psi
Hydraulic oil capacity	62 gal
Length to fork face	25'
Width	101"
Height	8' 2"
Wheelbase	141"
Ground clearance	16.5"
Turning radius	14'

*Weight based on open cab model with foam-filled tires.

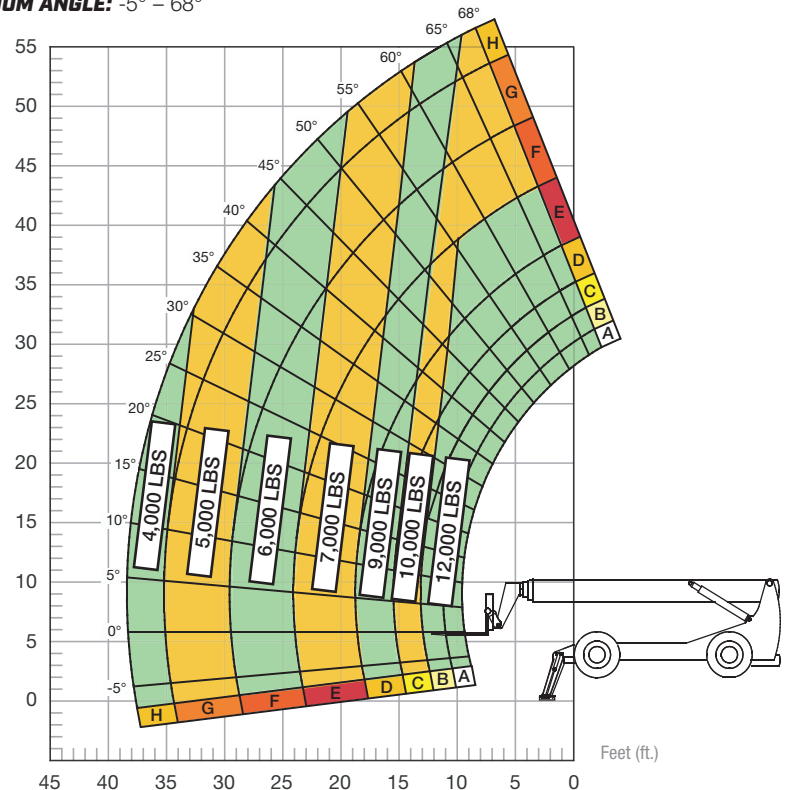
STANDARD FEATURES

- 360° operator visibility
- Suspension seat
- Easy service access
- Protected tilt & extend cylinders
- Steel hydraulic & fuel tank
- Long life Lexan labels
- Heavy-duty boom chains
- Suspended pedals
- Large-capacity fuel tank
- Trunnion-mounted sway cylinders
- Melonite pins
- Standard auxiliary hydraulics
- Steel dash
- Long-life boom rollers
- Center-mounted powertrain
- Cab step
- Ductile steel manifold
- Easy cab-mounted grab handles
- Master disconnect switch
- Boom lift point
- Manual lowering valve (cylinders)
- Large cross section boom
- Easy tie-downs
- Heavy-duty pre-cleaner
- Additional high-pressure hydraulic filter
- Steel hood
- Solid steel plate chassis
- Rear axle stabilization (RAS)
- Backup alarm with light
- Dual batteries
- "Y" frame handle
- Wider outrigger stance

LOAD CAPACITY CHART

Rear axle must be locked and outriggers firmly against ground. Load ratings shown are for vehicles equipped with foam-filled or solid tires. Load includes weight of any rigging. 6,000 lbs. at 24" minimum capacity/fork (12,000 lbs./pair).

BOOM ANGLE: -5° – 68°



FIXED CARRIAGE: OUTRIGGERS DOWN | 24" LOAD CENTER

