



## SPECIFICATIONS

Lift capacity	12,000 lbs
Max lift height	85'
Forward reach	67'
Frame leveling L/R	8°
Weight*	63,500 lbs
Engine (Cummins)	4.5L 173hp – T4F
Axles	Dana 213
Transmission	Dana T20000
Fuel capacity	100 gal
Tires	16 x 25 E3 foam-filled
Hydraulic flow (gpm)	49 gal
Hydraulic pressure	3,500 psi
Hydraulic oil capacity	70 gal
Length to fork face	28' 8"
Width	102"
Height	10' 1"
Wheelbase	151"
Ground clearance	15"
Turning radius	16' 8"

\*Weight based on open cab model with foam-filled tires.

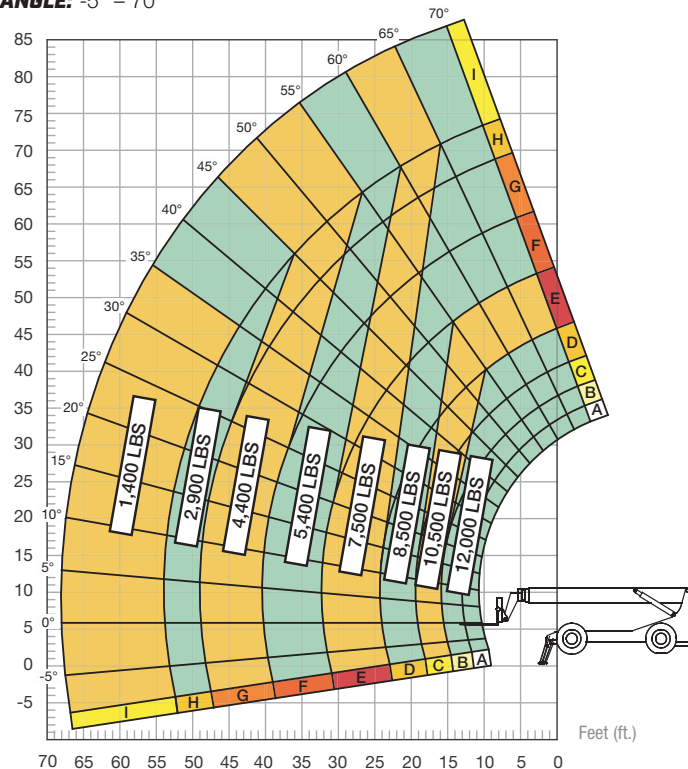
## STANDARD FEATURES

360° operator visibility	Ductile steel manifold
Suspension seat	Easy cab-mounted grab handles
Easy service access	Master disconnect switch
Protected tilt & extend cylinders	Boom lift point
Steel hydraulic & fuel tank	Manual lowering valve (cylinders)
Long life Lexan labels	Large cross section boom
Heavy-duty boom chains	Easy tie-downs
Suspended pedals	Heavy-duty pre-cleaner
Large-capacity fuel tank	Additional high-pressure hydraulic filter
Trunnion-mounted sway cylinders	Steel hood
Melonite pins	Solid steel plate chassis
Standard auxiliary hydraulics	Rear axle stabilization (RAS)
Steel dash	Backup alarm with light
Long-life boom rollers	Dual batteries
Electrical aux hydraulic control	"Y" frame handle
Center-mounted powertrain	Wider outrigger stance
Cab step	

## LOAD CAPACITY CHART

Rear axle must be locked and outriggers firmly against ground. Load ratings shown are for vehicles equipped with foam-filled tires only. 6,000 lbs. at 24" minimum capacity/fork (12,000 lbs./pair).

**BOOM ANGLE: -5° – 70°**



**FIXED CARRIAGE: OUTRIGGERS DOWN | 24" LOAD CENTER**

