



## SPECIFICATIONS

Lift capacity	20,000 lbs
Max lift height	42'
Forward reach	24' 10"
Frame leveling L/R	8°
Weight*	42,820 lbs
Engine (Cummins)	3.8L 134hp – T4F
Axles	Dana 213
Transmission	Dana T20000
Fuel capacity	72 gal
Tires	17.5 x 25 G2 foam-filled
Hydraulic flow (gpm)	49 gal
Hydraulic pressure	4,000 psi
Hydraulic oil capacity	58 gal
Length to fork face	26' 1"
Width	102"
Height	8' 11"
Wheelbase	147"
Ground clearance	16.5"
Turning radius	15' 10"

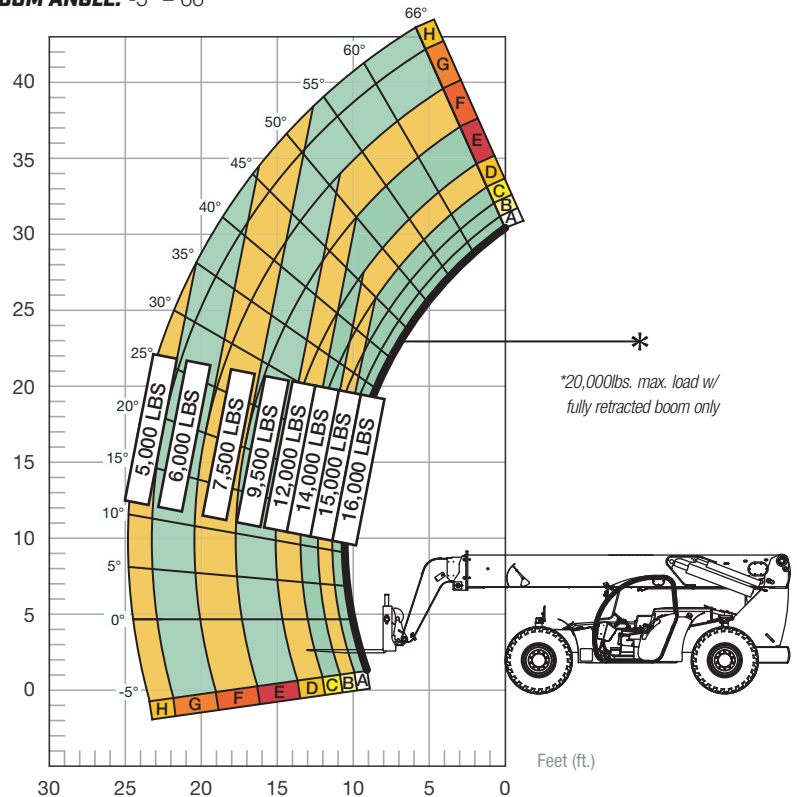
## STANDARD FEATURES

- 360° operator visibility
- Suspension seat
- Easy service access
- Protected tilt & extend cylinders
- Steel hydraulic & fuel tank
- Long life Lexan labels
- Heavy-duty boom chains
- Suspended pedals
- Large-capacity fuel tank
- Trunnion-mounted sway cylinders
- Melonite pins
- Standard auxiliary hydraulics
- Steel dash
- Long-life boom rollers
- Electrical aux hydraulic control
- Center-mounted powertrain
- Ductile steel manifold
- Easy cab-mounted grab handles
- Master disconnect switch
- Boom lift point
- Manual lowering valve (cylinders)
- Large cross section boom
- Easy tie-downs
- Heavy-duty pre-cleaner
- Additional high-pressure hydraulic filter
- Individual gauges/switches
- Steel hood
- Solid steel plate chassis
- Rear axle stabilization (RAS)
- Backup alarm with light
- Dual batteries
- "Y" frame handle

## LOAD CAPACITY CHART

Load ratings shown are for vehicles equipped with foam-filled tires only. 10,000 lbs. at 24" minimum capacity/fork (20,000 lbs./pair).

**BOOM ANGLE: -5° – 66°**



**FIXED CARRIAGE | 24" LOAD CENTER**



\*Weight based on open cab model with foam-filled tires.