

SPECIFICATIONS

Lift capacity	20,000 lbs
Max lift height	45'
Forward reach	27' 4"
Frame leveling L/R	8°
Weight*	47,100 lbs
Engine (Cummins)	3.8L 134hp – T4F
Axles	Dana 213
Transmission	Dana T20000
Fuel capacity	72 gal
Tires	17.5 x 25 G2 foam-filled
Hydraulic flow (gpm)	49 gal
Hydraulic pressure	4,000 psi
Hydraulic oil capacity	58 gal
Length to fork face	23' 6"
Width	102"
Height	8' 11"
Wheelbase	147"
Ground clearance	16.5"
Turning radius	15' 10"

*Weight based on open cab model with foam-filled tires.

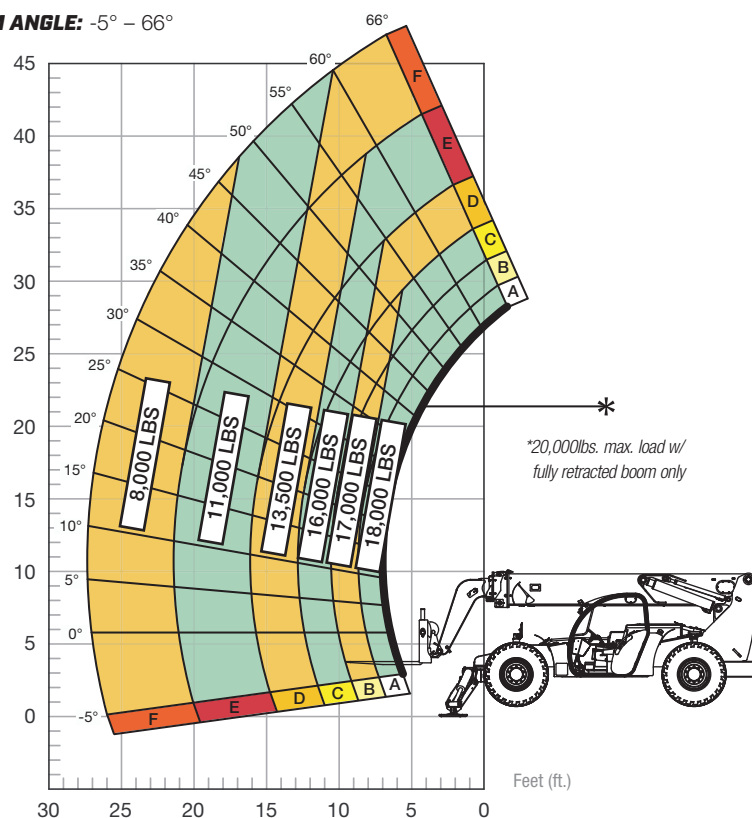
STANDARD FEATURES

360° operator visibility	Ductile steel manifold
Suspension seat	Easy cab-mounted grab handles
Easy service access	Master disconnect switch
Protected tilt & extend cylinders	Boom lift point
Steel hydraulic & fuel tank	Manual lowering valve (cylinders)
Long life Lexan labels	Large cross section boom
Heavy-duty boom chains	Easy tie-downs
Suspended pedals	Heavy-duty pre-cleaner
Large-capacity fuel tank	Additional high-pressure hydraulic filter
Trunnion-mounted sway cylinders	Individual gauges/switches
Melonite pins	Steel hood
Standard auxiliary hydraulics	Solid steel plate chassis
Steel dash	Rear axle stabilization (RAS)
Long-life boom rollers	Backup alarm with light
Electrical aux hydraulic control	Dual batteries
Center-mounted powertrain	"Y" frame handle
Cab step	

LOAD CAPACITY CHART

Load ratings shown are for vehicles equipped with foam-filled tires only. 10,000 lbs. at 24" minimum capacity/fork (20,000 lbs./pair).

BOOM ANGLE: -5° – 66°



FIXED CARRIAGE: OUTRIGGERS DOWN | 24" LOAD CENTER

