

## SPECIFICATIONS

Lift capacity	30,000 lbs
Max lift height	34'
Forward reach	17' 4"
Frame leveling L/R	8°
Weight*	49,980 lbs
Engine (Cummins)	QSB 4.5L 173hp – T4F
Axles	Kessler 82.8416.3
Transmission	Dana T14
Fuel capacity	72 gal
Tires	16 x 25 E3 foam-filled
Hydraulic flow (gpm)	49 gal
Hydraulic pressure	4,500 psi
Hydraulic oil capacity	58 gal
Length to fork face	24' 6"
Width	101"
Height	9' 6"
Wheelbase	148"
Ground clearance	15"
Turning radius	16' 8"

\*Weight based on closed cab model with heat/AC and foam-filled tires.

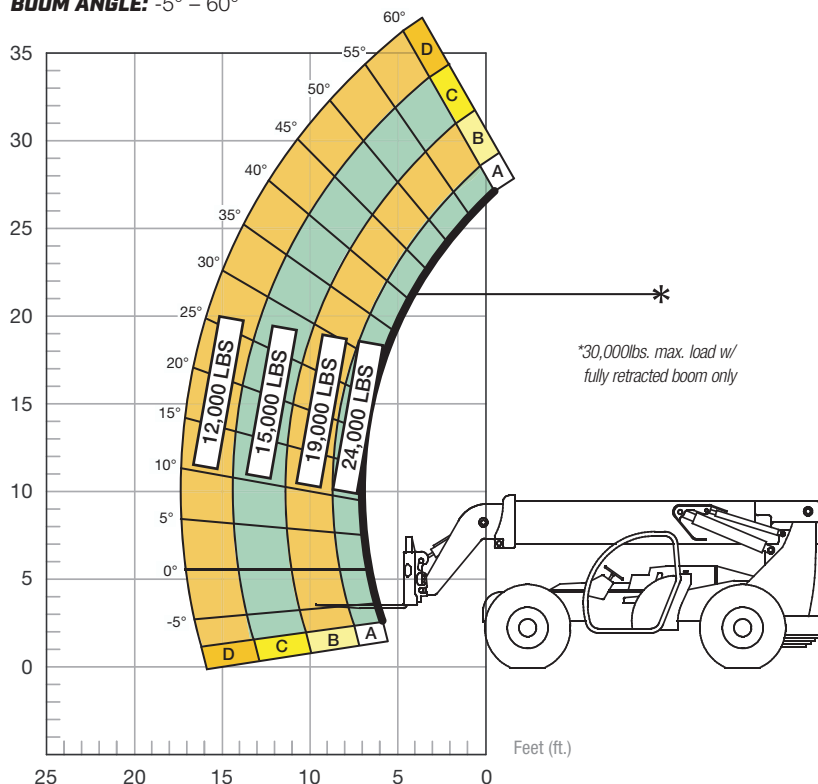
## STANDARD FEATURES

360° operator visibility	Ductile steel manifold
Suspension seat	Easy cab-mounted grab handles
Easy service access	Master disconnect switch
Protected tilt & extend cylinders	Boom lift point
Steel hydraulic & fuel tank	Manual lowering valve (cylinders)
Long life Lexan labels	Large cross section boom
Heavy-duty boom chains	Easy tie-downs
Suspended pedals	Heavy-duty pre-cleaner
Large-capacity fuel tank	Additional high-pressure hydraulic filter
Trunnion-mounted sway cylinders	Steel hood
Melonite pins	Solid steel plate chassis
Standard auxiliary hydraulics	Rear axle stabilization (RAS)
Steel dash	Backup alarm with light
Long-life boom rollers	Dual batteries
Center-mounted powertrain	"Y" frame handle
Cab step	

## LOAD CAPACITY CHART

Load ratings shown are for vehicles equipped with foam-filled tires only. 15,000 lbs. at 24" minimum capacity/fork (30,000 lbs./pair).

**BOOM ANGLE: -5° – 60°**



**FIXED CARRIAGE | 24" LOAD CENTER**

