

# XR50100-G



**G** CLASS  
CARRIAGE

**MEGA  
XTREME  
CAPACITY  
ROLLER BOOM**

## SPECIFICATIONS

Lift capacity	50,000 lbs
Max lift height	100'
Forward reach	55'
Frame leveling L/R	5° w/ boom below 20°
Weight*	160,000 lbs
Engine (Cummins)	X 15.0L 675hp – T4F
Axles	Extending front & rear
Transmission	Linde HPV165
Fuel capacity	300 gal
Tires	24" wide tracks
Hydraulic flow (gpm)	165 gal
Hydraulic pressure	4,000 psi
Hydraulic oil capacity	350 gal
Length to fork face	41'
Width (retracted / extended)	143" / 204"
Height	11' 7"
Wheelbase (ret. / ext.)	252" / 330"
Ground clearance	20"
Turning radius	23'

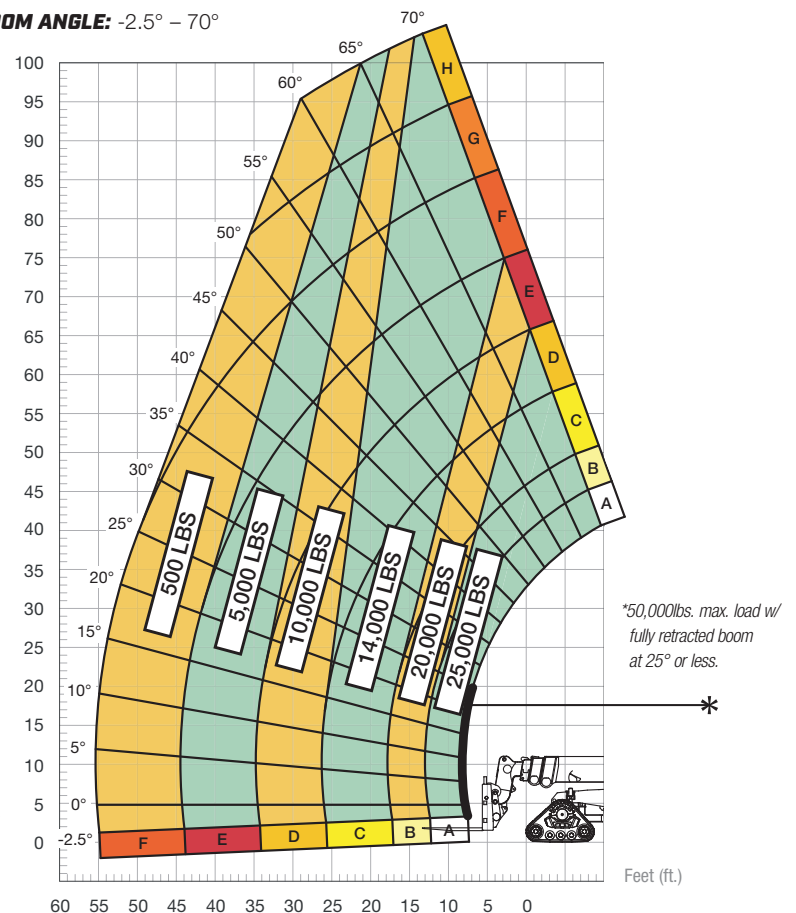
## STANDARD FEATURES

360° operator visibility	Master disconnect switch
Suspension seat	Boom lift point
Easy service access	Manual lowering valve (cylinders)
Protected tilt & extend cylinders	Large cross section boom
Steel hydraulic & fuel tank	Easy tie-downs
Long life Lexan labels	Heavy-duty pre-cleaner
Large-capacity fuel tank	Additional high-pressure hydraulic filter
Trunnion-mounted sway cylinders	Multi-function display screen
Melonite pins	Solid steel plate chassis
Dual auxiliary hydraulic circuits	Backup alarm with light
Steel dash	Rear backup camera
Long-life boom rollers	Triple batteries
Ductile steel manifold	Hydraulic cab lift/lower/rotate
Easy cab-mounted grab handles	

## LOAD CAPACITY CHART

Load ratings shown are for vehicles equipped with tracks in the extended position only. 25,000 lbs. at 48" minimum capacity/fork (50,000 lbs./pair).

**BOOM ANGLE: -2.5° – 70°**



**FORK POSITIONING CARRIAGE | 48" LOAD CENTER**



Xtreme machines are proudly manufactured & assembled in the USA.

[www.xmfg.com](http://www.xmfg.com)