



SPECIFICATIONS

Lift capacity	6,000 lbs
Max lift height	19'
Forward reach	11'
Frame leveling L/R	N/A
Weight*	10,560 lbs
Engine (Deutz)	2.9L 74hp – T4F
Axles	Comer S128
Transmission	Linde HPV 055
Fuel capacity	17 gal
Tires	12 x 16.5 R4 pneumatic
Hydraulic flow (gpm)	16 gal
Hydraulic pressure	3,200 psi
Hydraulic oil capacity	22 gal
Length to fork face	12' 8"
Width	71"
Height	6' 6"
Wheelbase	93"
Ground clearance	10.8"
Turning radius	11'

*Weight based on open cab model with foam-filled tires.

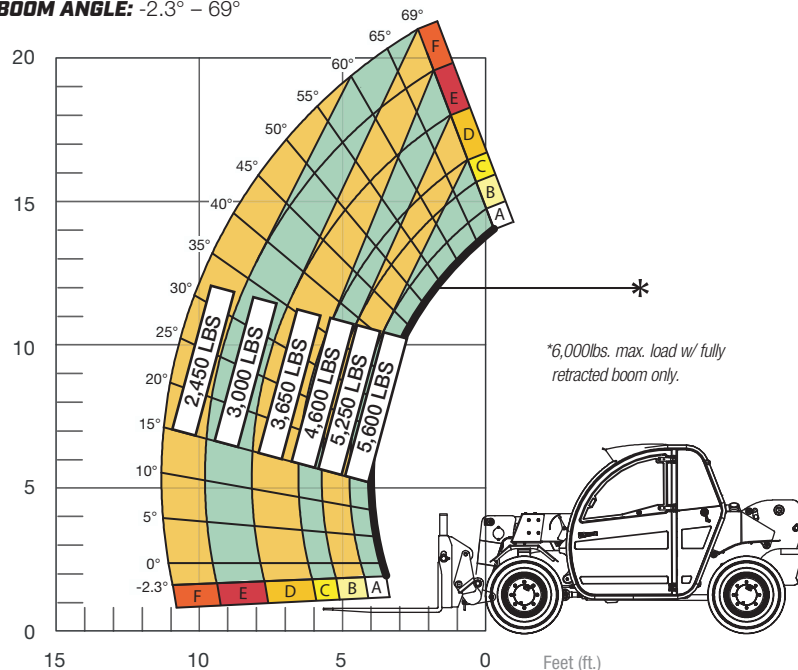
STANDARD FEATURES

360° operator visibility	Master disconnect switch
Suspension seat	Boom lift point
Easy service access	Manual lowering valve (cylinders)
Protected tilt & extend cylinders	Large cross section boom
Steel hydraulic & fuel tank	Easy tie-downs
Long life Lexan labels	Heavy-duty pre-cleaner
Suspended pedals	Additional high-pressure hydraulic filter
Large-capacity fuel tank	Individual gauges/switches
Melonite pins	Solid steel plate chassis
Standard auxiliary hydraulics	Backup alarm
Steel dash	Battery
Long-life boom rollers	Limited-slip front axle
Electrical aux hydraulic control	Fiberglass engine hood
Side-mount engine	
Hydrostatic rivets	
Ductile steel manifold	
Easy cab-mounted grab handles	

LOAD CAPACITY CHART

Load ratings shown are for vehicles equipped with air-filled, foam-filled or solid tires. Load includes weight of any rigging. 3,000 lbs. at 24" minimum capacity/fork (6,000 lbs./pair).

BOOM ANGLE: -2.3° – 69°



FIXED CARRIAGE | 24" LOAD CENTER

