

# XR7038-F

**F** CLASS  
CARRIAGE

**ULTRA  
XTREME  
CAPACITY  
ROLLER BOOM**

## SPECIFICATIONS

Lift capacity	70,000 lbs
Max lift height	38' 2"
Forward reach	22'
Frame leveling L/R	7°
Weight*	115,000 lbs
Engine (Cummins)	QSL 9.0L 300hp – T4F
Axles	Kessler 101.2228.3
Transmission	Dana T36000
Fuel capacity	150 gal
Tires	29.5 x 29 E3 foam-filled
Hydraulic flow (gpm)	92 gal
Hydraulic pressure	4,200 psi
Hydraulic oil capacity	140 gal
Length to fork face	27' 9"
Width	135"
Height	11' 7"
Wheelbase	188"
Ground clearance	20.5"
Turning radius	24' 6"

\*Weight based on closed cab model with heat/AC and foam-filled tires.

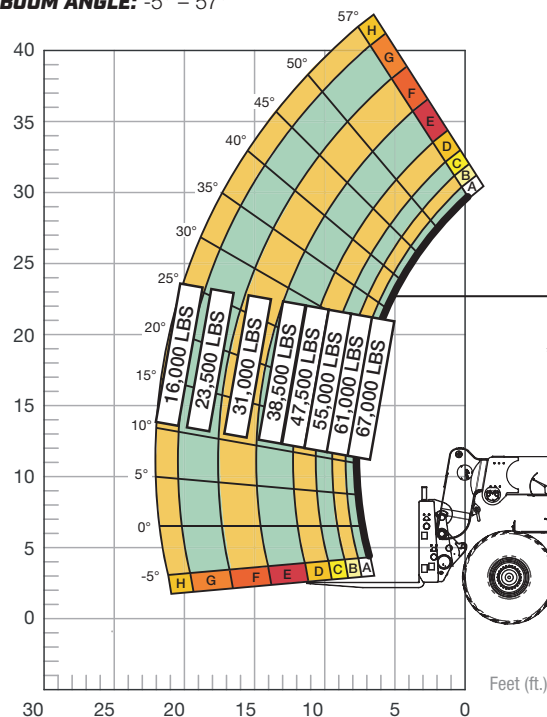
## STANDARD FEATURES

360° operator visibility	Ductile steel manifold
Suspension seat	Easy cab-mounted grab handles
Easy service access	Master disconnect switch
Protected tilt & extend cylinders	Boom lift point
Steel hydraulic & fuel tank	Manual lowering valve (cylinders)
Long life Lexan labels	Large cross section boom
Heavy-duty boom chains	Easy tie-downs
Suspended pedals	Heavy-duty pre-cleaner
Large-capacity fuel tank	Additional high-pressure hydraulic filter
Trunnion-mounted sway cylinders	Multi-function display screen
Melonite pins	Solid steel plate chassis
Standard auxiliary hydraulics	Rear axle stabilization (RAS)
Steel dash	Backup alarm with light
Long-life boom rollers	Dual batteries
Center-mounted powertrain	Front camera on carriage
Cab step	

## LOAD CAPACITY CHART

Load ratings shown are for vehicles equipped with foam-filled tires only. 35,000 lbs. at 48" minimum capacity/fork (70,000 lbs./pair).

**BOOM ANGLE: -5° – 57°**



**FORK POSITIONING CARRIAGE | 48" LOAD CENTER**

