



## SPECIFICATIONS

Lift capacity	9,000 lbs
Max lift height	44'
Forward reach	28' 10" / 30' 4"
Frame leveling L/R	11°
Weight*	28,700 lbs
Engine (Cummins)	3.8L 74/120hp – T4F
Axles	ZF MST3055 / 3060
Transmission	ZF 3WG94
Fuel capacity	50 gal
Tires	15.5 x 25 G2 foam-filled
Hydraulic flow (gpm)	49 gal
Hydraulic pressure	3,500 psi
Hydraulic oil capacity	62/45 gal
Length to fork face	21' 3"
Width	101"
Height	8'
Wheelbase	125"
Ground clearance	16.5"
Turning radius	12'

\*Weight based on open cab model with foam-filled tires.

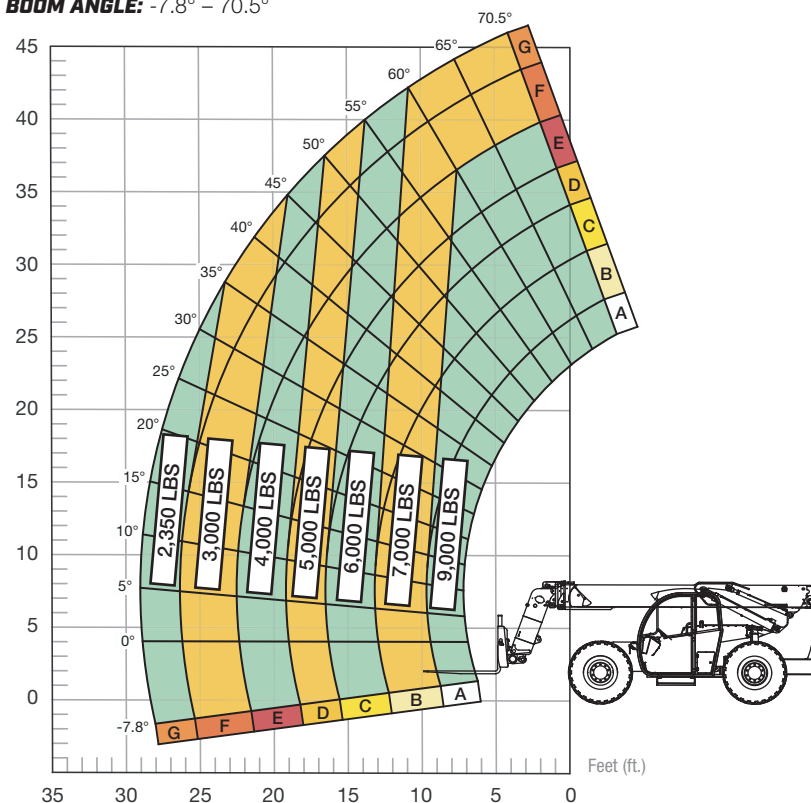
## STANDARD FEATURES

360° operator visibility	Ductile steel manifold
Suspension seat	Easy cab-mounted grab handles
Easy service access	Master disconnect switch
Protected tilt & extend cylinders	Boom lift point
Steel hydraulic & fuel tank	Manual lowering valve (cylinders)
Long life Lexan labels	Large cross section boom
Heavy-duty boom chains	Easy tie-downs
Suspended pedals	Heavy-duty pre-cleaner
Large-capacity fuel tank	Additional high-pressure hydraulic filter
Trunnion-mounted sway cylinders	Individual gauges/switches
Melonite pins	Steel hood
Standard auxiliary hydraulics	Solid steel plate chassis
Steel dash	Rear axle stabilization (RAS)
Long-life boom rollers	Backup alarm with light
Electrical aux hydraulic control	Dual batteries
Center-mounted powertrain	Limited-slip front axle
Cab step	

## LOAD CAPACITY CHART

Load ratings shown are for vehicles equipped with foam-filled or solid tires. Load includes weight of any rigging. 4,500 lbs. at 24" minimum capacity/fork (9,000 lbs./pair).

**BOOM ANGLE: -7.8° – 70.5°**



**FIXED CARRIAGE | 24" LOAD CENTER**

